

N 64 Pedagna Sud  
 Piano Particolareggiato di Iniziativa Privata  
 approvato con delibera C.C. n.135 del 21.07.2010  
 Variante approvata con delibera C.C. n.200 del 30.10.2012  
 Comune di Imola • Foglio 179

**SECONDA VARIANTE**

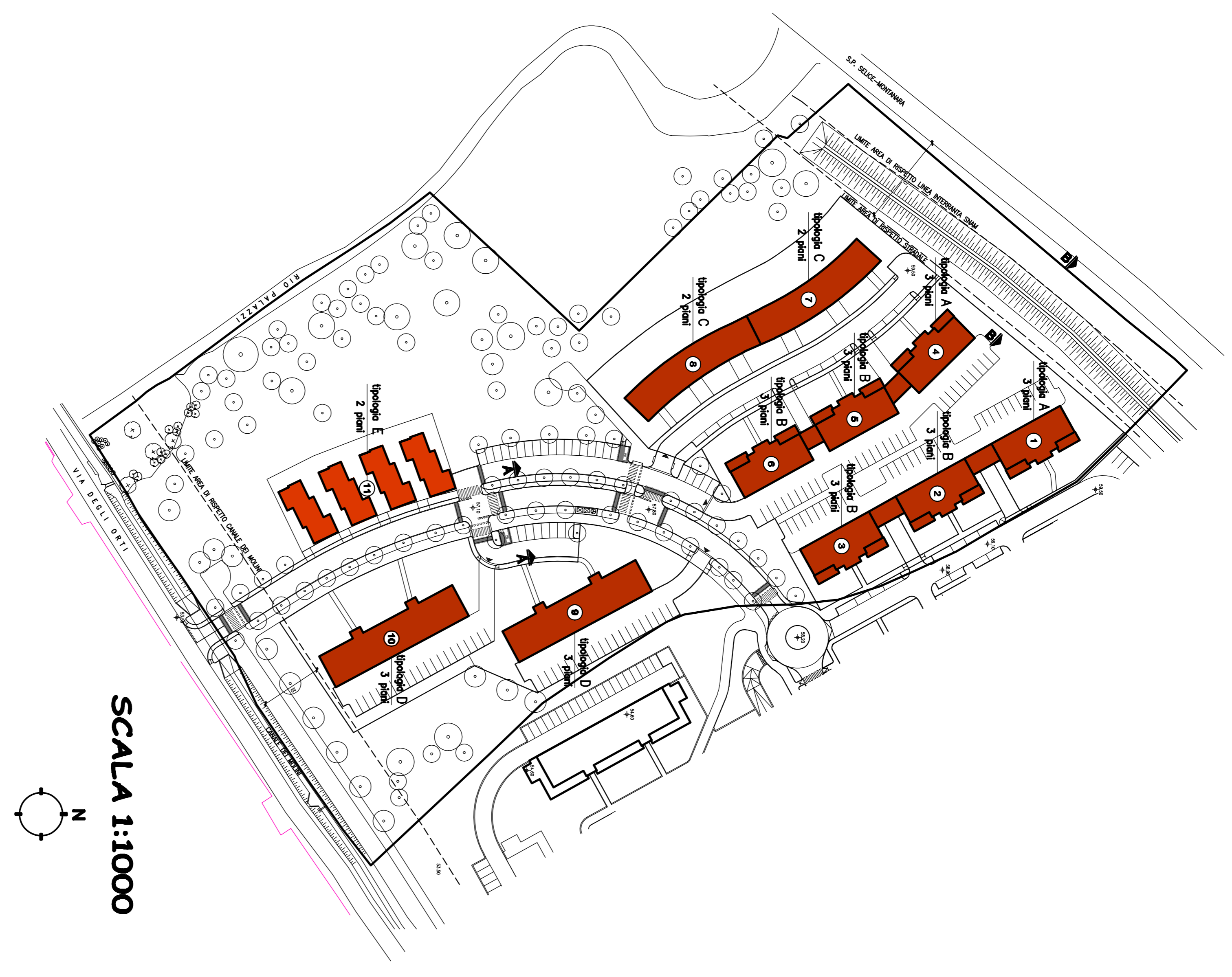
TIPOLOGIE  
 scala 1:1000 - 1:200

**PROPRIETA'**  
**ALFONSA SECONDA**  
 Cooperativa Edilizia  
 Imola, Via Cassino 19

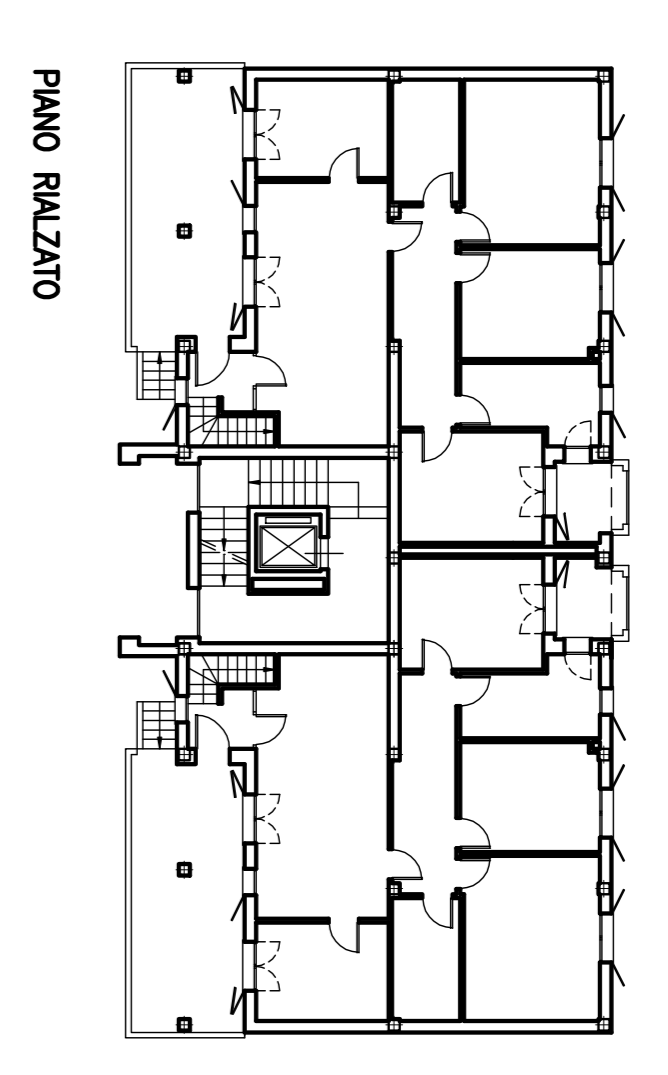
**SALVARO COSTRUZIONI S.R.L.**  
 Soc. Gen. Edile Imolese  
 Imola, Via Firenze 1

**PROGETTISTA:**  
**ZINELLO S.R.L.**  
 Imolese, Via Carlo Farini 2

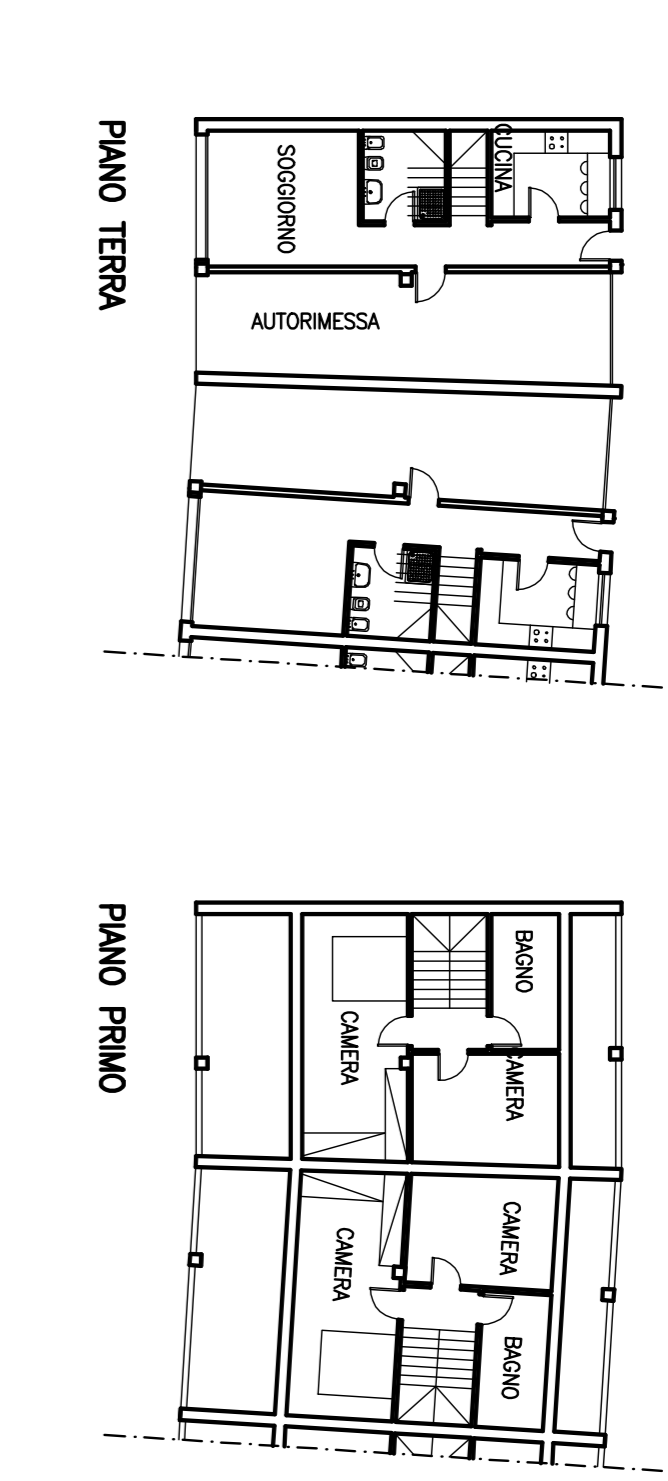
Spazio Prodotto Ufficio Tecnico  
 Dicembre 2010



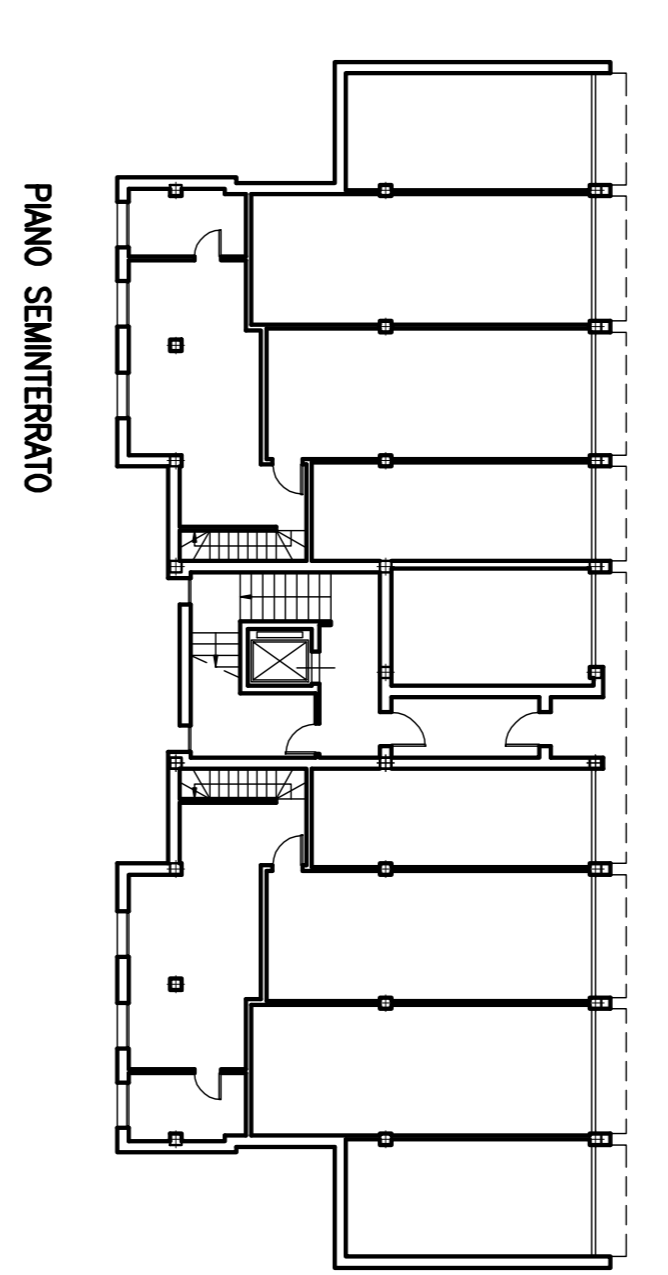
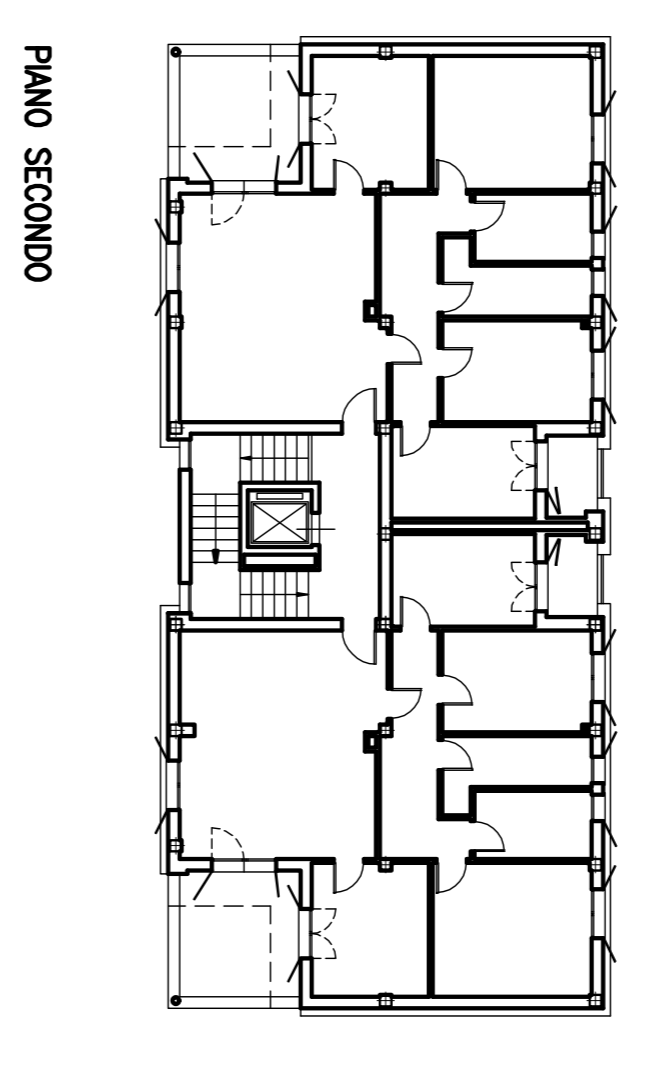
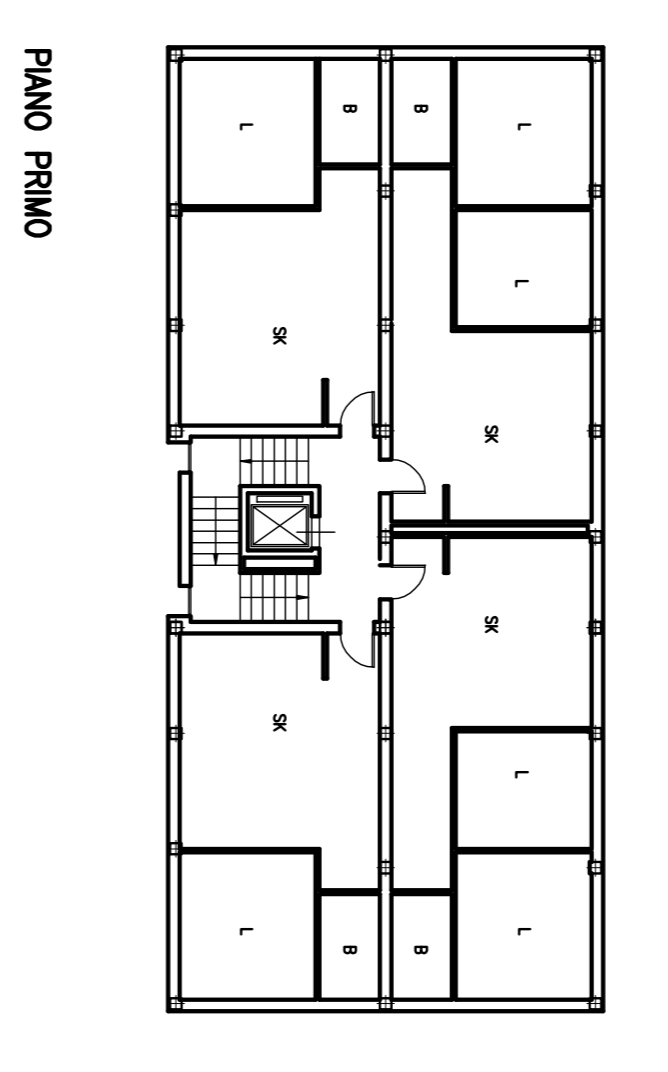
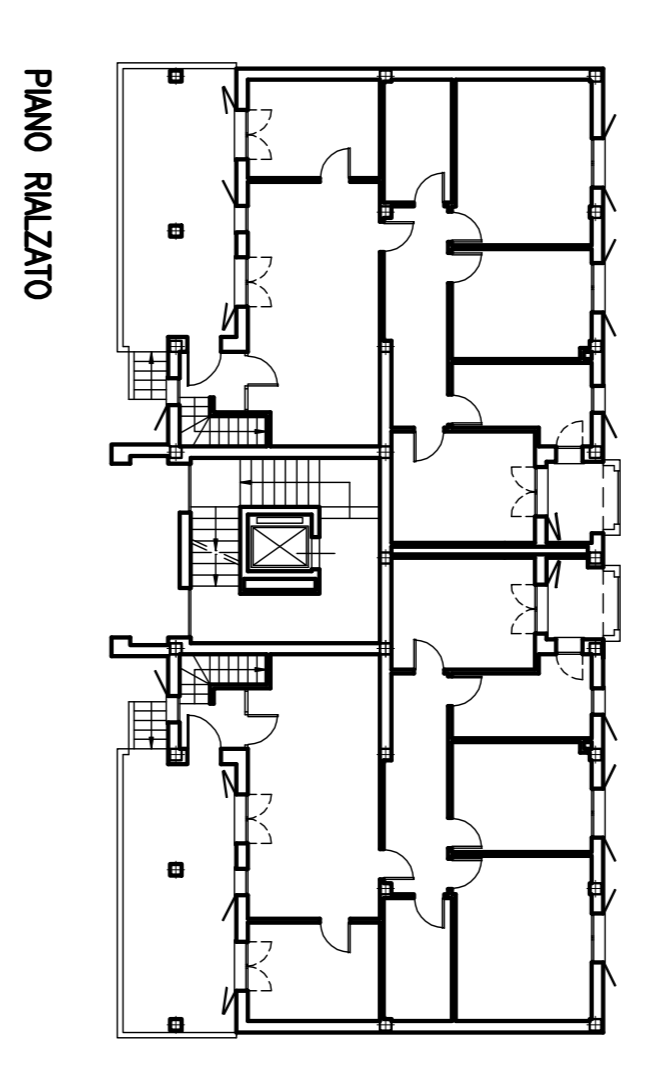
**TIPOLOGIA A**  
 3 piani S.U. mq 400 - S.E.T. mq 800



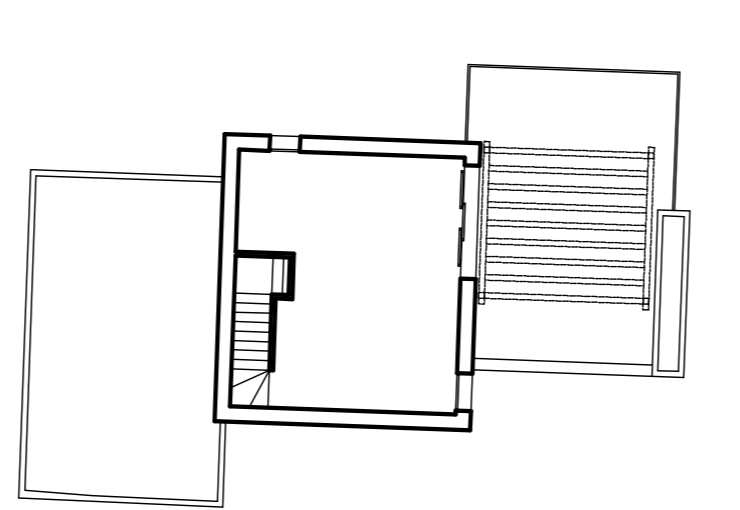
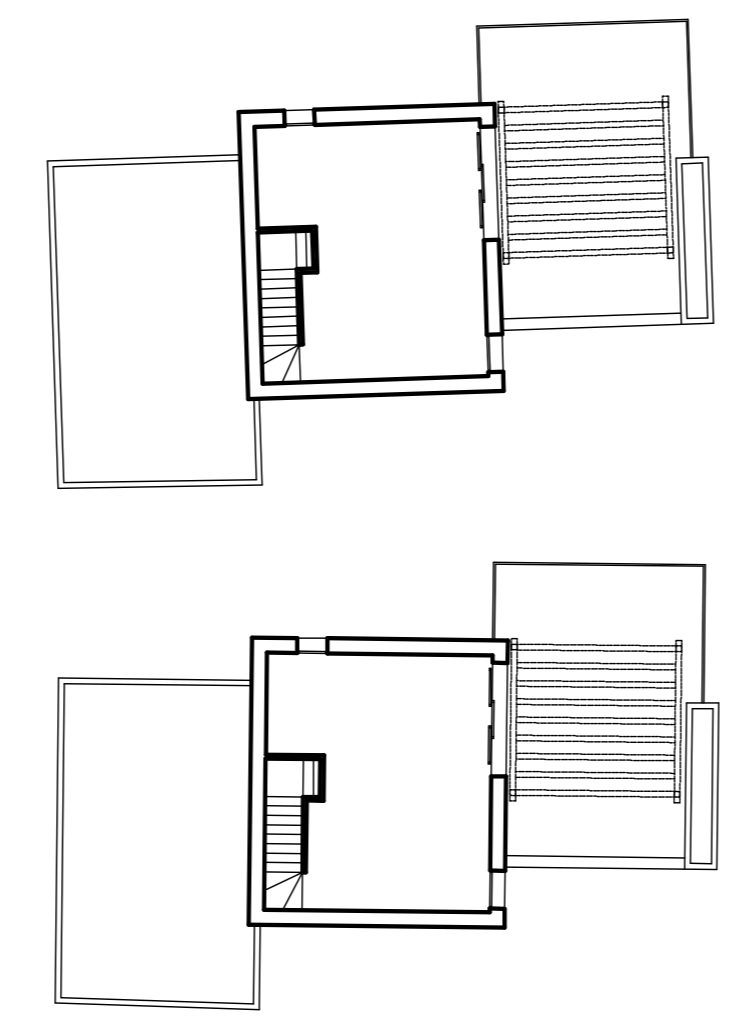
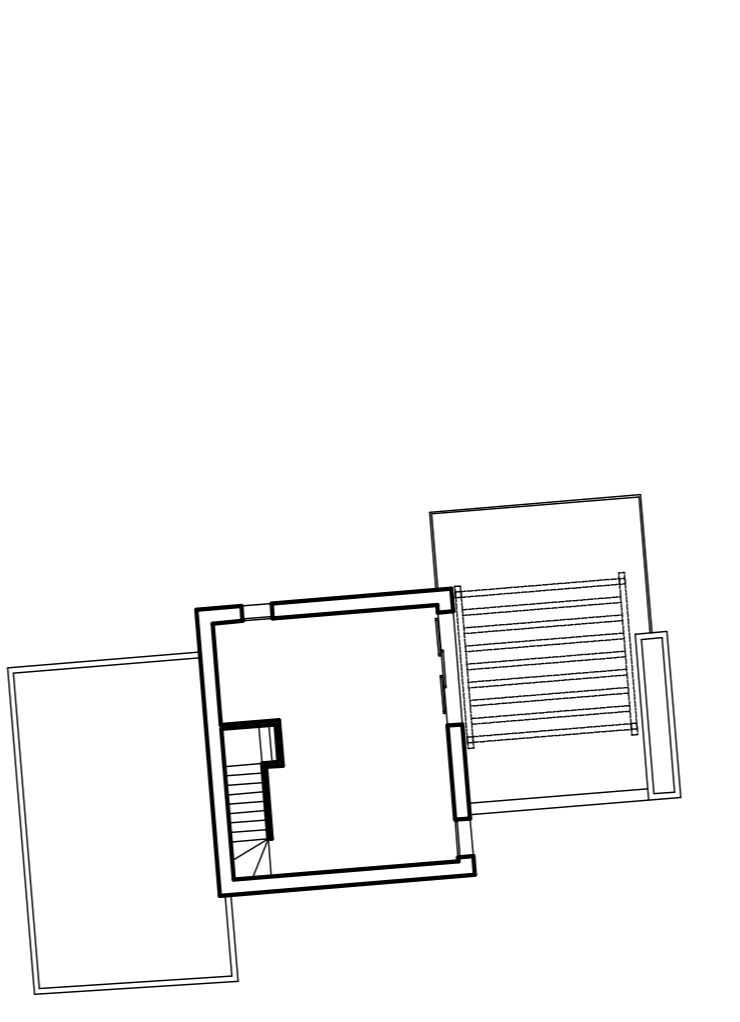
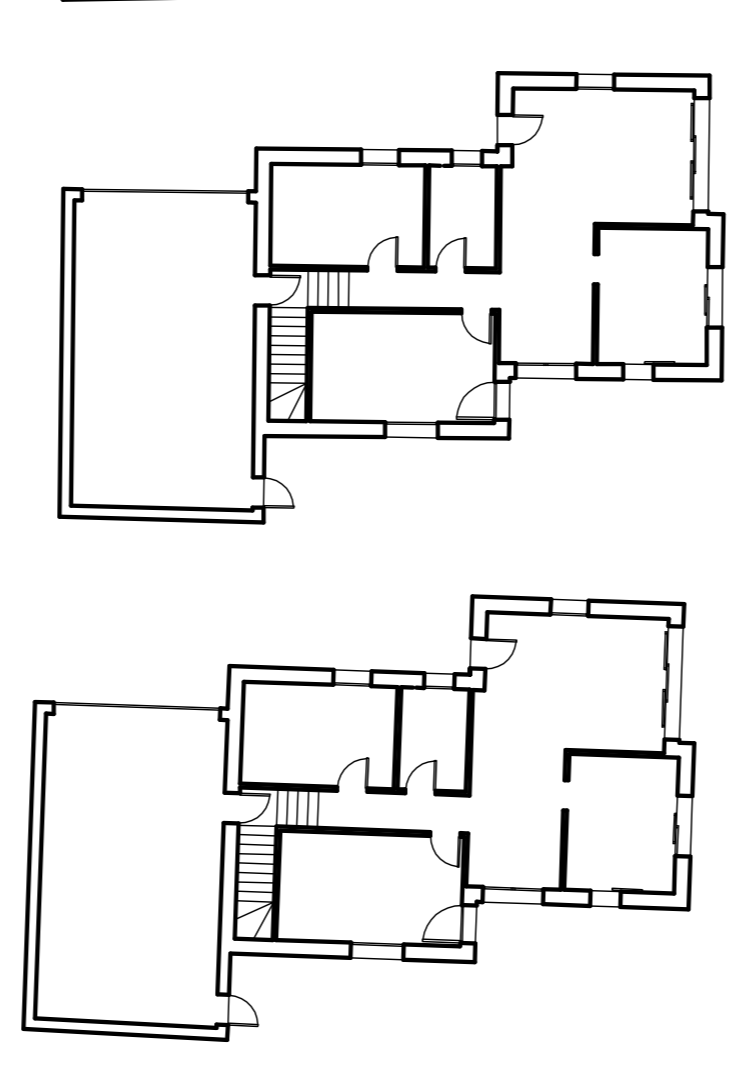
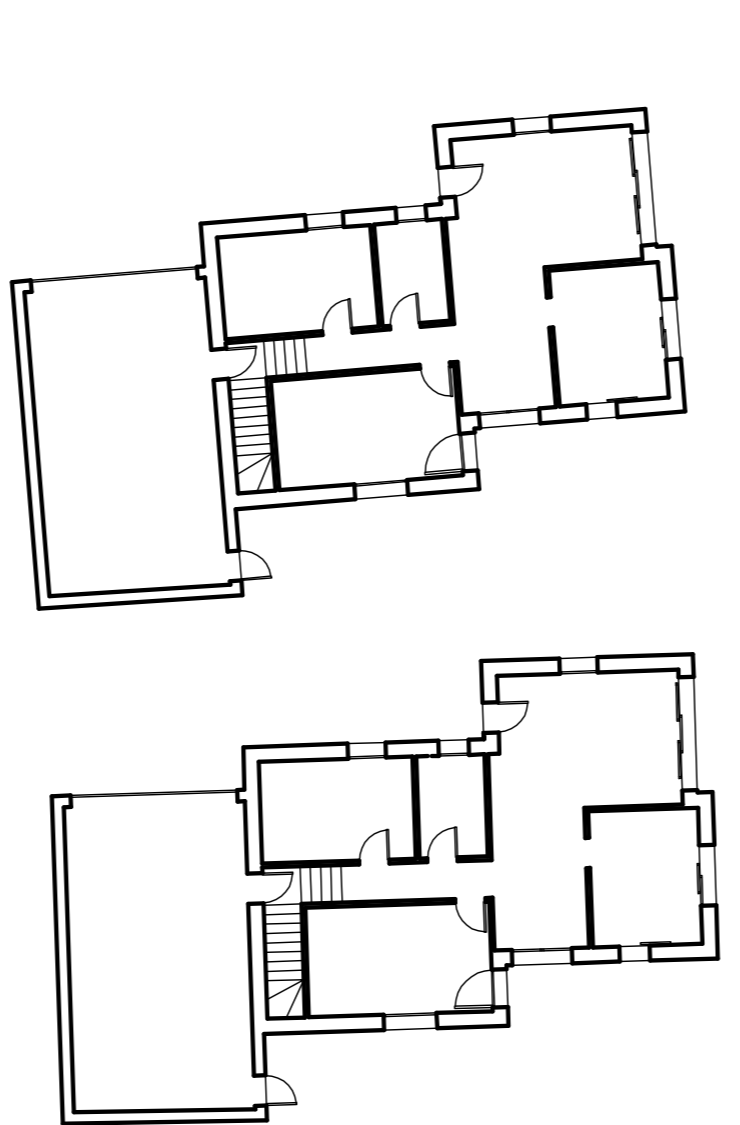
**TIPOLOGIA C**  
 2 piani S.U. mq 484 - S.E.T. mq 968



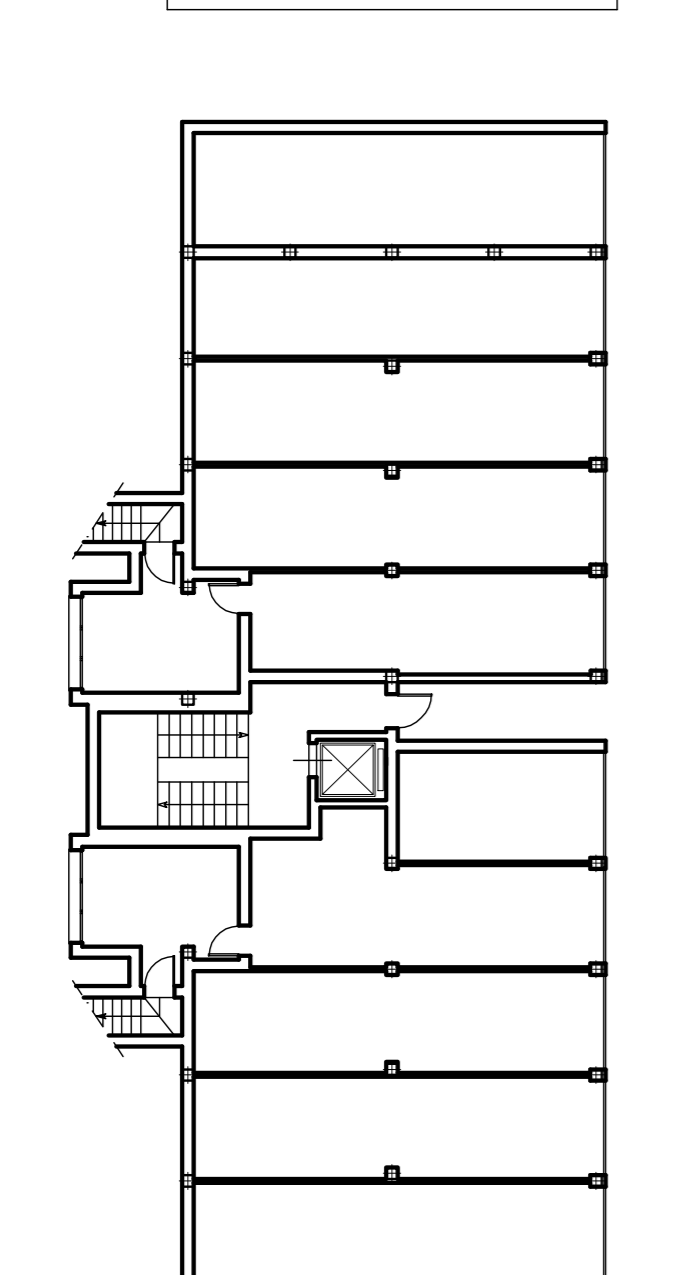
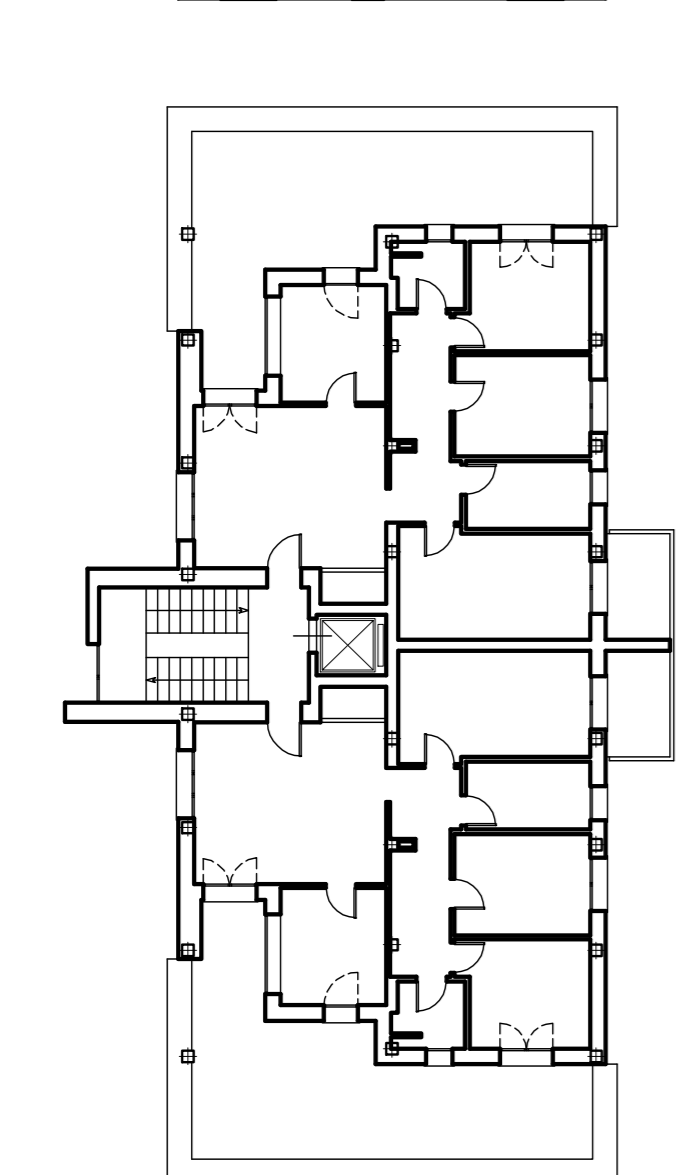
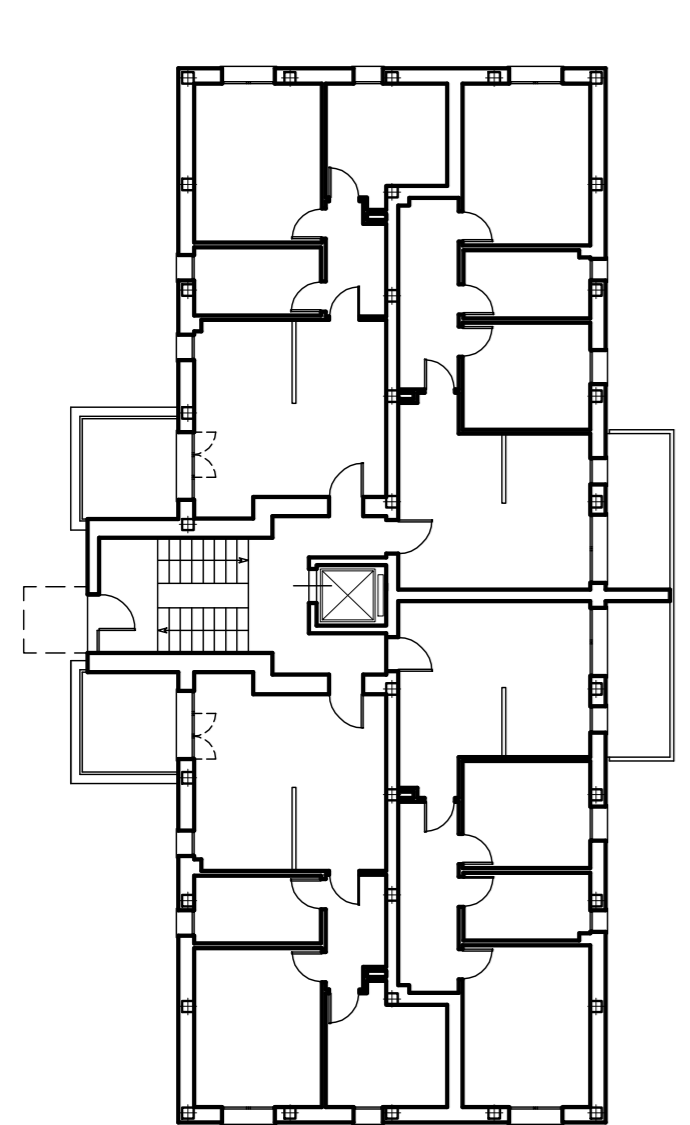
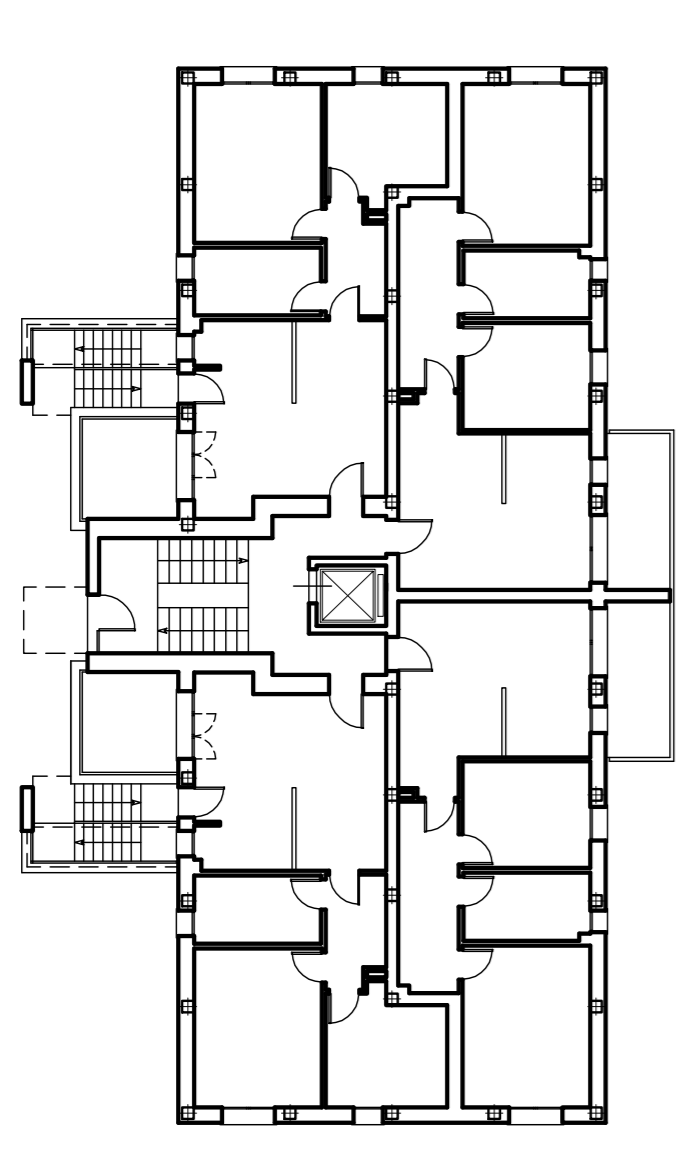
**TIPOLOGIA B**  
 3 piani S.U. mq 650 - S.E.T. mq 1260



**TIPOLOGIA E**  
 2 piani S.U. mq 350 - S.E.T. mq 1100



**TIPOLOGIA D**  
 3 piani S.U. mq 1108 - S.E.T. mq 2212



**TIPOLOGIA A**  
 Piano Terra

**TIPOLOGIA B**  
 Piano Primo

**TIPOLOGIA C**  
 Piano Secondo

**TIPOLOGIA D**  
 Piano Seminterrato